

OKLAHOMA AND TEXAS WHEAT BINS ARE EMPTY

Special to The Star-Telegram

OKLAHOMA CITY, Dec. 31. The end of the year witnessed empty bins and empty elevators in nearly all sections of the grain belt of Oklahoma and Texas. Dealers say that practically all of the season's wheat crop has been sold.

An improvement in the car situation, attractive wheat prices and favorable weather in December contributed to the movement of wheat and the amount that moved was surprisingly large.

During the latter part of December, when milling demands decreased, milling premiums decreased accordingly and by the end of the year domestic and export bids were virtually on par. Movement was hindered to some extent by the wide margin between cash prices and option bids, the range in some instances being 10 cents a bushel.

Crop Situation.

The crop situation at the year's end in many sections of the Southwest was not bright. December did not provide the moisture needed. On the contrary it provided much sunshine and strong winds. Wheat was damaged materially by these and its growth was hindered also by a freeze. Dealers say that complaints of dry weather have come from many sections. Unless moisture is provided in January and February, crop prospects will be exceptionally poor.

On the whole the year has been satisfactory to grain dealers, many of whom say that conditions were more nearly normal than since 1914. It was satisfactory to probably a majority of millers whose dependence was on domestic, and particularly local, business alone. It was a poor year for the exporting miller of the Southwest.

Outlook Encouraging.

The outlook among millers, both for domestic and export business, is encouraging, unless exports are again seriously affected by war clouds in the Near East. The West Indies, Central America and South America, exporters say, give promise of a much better business than in 1922.

The Texas mill demand for wheat was very light last week, although there was a regular movement in that direction. Oklahoma millers were not strong in the market. Not a few mills closed operations entirely during the holiday season and practically all salesmen were called in. The taking of inventories is under way among mills. Some of the leading concerns take semi-annual inventories.

Light Stocks Desired.

Millfeed demands decreased about to the floor level. Principally to the fact that light stocks were desired at the end of the year. A revival of millfeeds is not expected for several weeks.

Field seeds began moving with a little impetus during the latter half of December, particularly cane and sorghum. Dealers forecast an exceptional demand for practically all field seeds. Southern states, Oklahoma and Eastern Texas, comprising territory of great importance to the oats industry, had short crop of oats and probably will be unable to fill the seed demand from Southern states. Some seed corn already has been sold. The supply of this in Oklahoma and Texas probably will be limited. Generally throughout this territory the production of field seed was below normal.

Prices Remain Stationary.

While the Oklahoma Millers' Association nor the Oklahoma Grain Dealers' Association has expressed an opinion through any official source as to probable legislation affecting the grain and milling industries, individual members say that they do not fear that radical legislation by the Oklahoma Legislature.

In short, they do not fear that an attempt will be made to put the state in the elevator or milling business. Some individual grain dealers have approved of the program of some individual legislators to have the state assist co-operative and marketing associations.

No changes were made in flour or millfeed prices during the week.

When royal English children wed Parliament usually gives them a dowry of \$50,000 to \$150,000.

WRIGHT STAGE LINE

Quannah to Floydada, via Paducah and Matador. Leave Quannah on arrival Denver train 7; leave Floydada 12:30 p. m.

SEVEN-DAY SERVICE

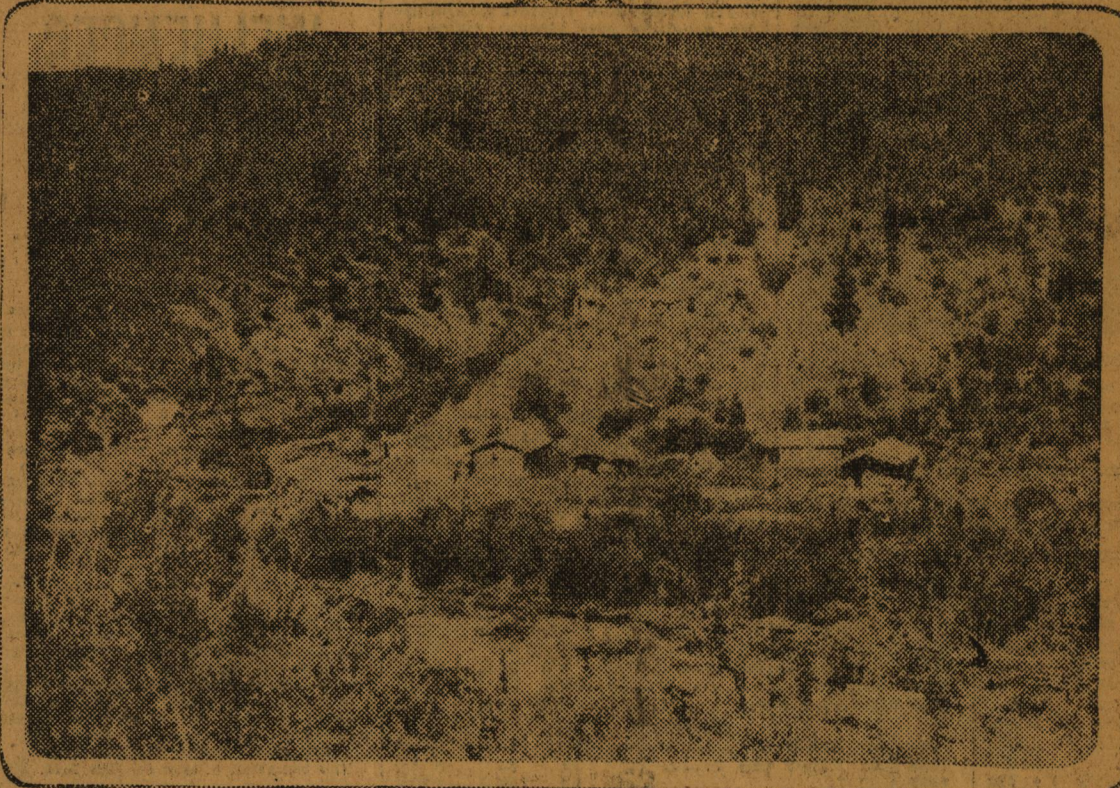
Gunter Hotel

SAN ANTONIO, TEXAS. Official Headquarters for T. E. A. and A. A. Absolutely Fireproof. Modern. Large Display Rooms for Commercial Men. A Hotel Built for the Climate. Percy Terrell, Manager. San Antonio Hotel Co., Owners.

Income Tax Corporation Law General Practice
W. L. COLEY
ATTORNEY AND COUNSELLOR
Tel. Lamar 5294
1202 F. & M. Bank Bldg.
Fort Worth, Texas
Correct application of the income tax law to business is of vital importance

LONE STAR STAGE LINE
Brackenridge, Mineral Wells, Fort Worth. Leaves Terminal Hotel, 108 Front St., Fort Worth, 9 a. m. and 1 p. m. daily. Leaves Sager Hotel, Brackenridge, 8:30 a. m. and 1 p. m. daily. Phone Brackenridge 215. Mineral Wells 219, Fort Worth Lamar 3994.

SYKES-M'CANDLESS GOLD CAMP IN ALASKA



OKLAHOMAN HALF OWNER OF ALASKAN GOLD FIELD, VALUE OF WHICH IS \$100,000,000

Special to The Star-Telegram.

ARDMORE, Dec. 31.—One hundred million dollars is the value placed by a representative of the United States Bureau of Mines on a gold bearing strata of land in Alaska owned by C. E. Sykes of Ardmore, oil man and big game hunter, and his partner, A. A. McCandless. The tract is located in the 40-mile river country and extends for a distance of five miles along the river and is more than one-fourth of a mile in width on each bank. No operations have been started, but it is expected that work will be under way in the near future, following further development on another mine which the two men own in the Wade Creek district.

Sykes shipped a carload of machinery out of St. Paul, Minn., to the Wade Creek mine several weeks ago, for more extensive operations there.

Receives Nuggets.

During the past week, Sykes received a shipment of 20 pouches of gold nuggets from his Wade Creek property, which he has deposited in an Ardmore bank. The bank has shipped the gold to a Government mint where it will be weighed and valued, following which the amount it represents will be credited to Sykes' account. This is believed to be the first shipment of its kind which has ever arrived in Oklahoma.

Sykes first became interested in Alaskan mining in 1919, at which time he started on his first big game hunt in those regions. He became acquainted with McCandless while traveling on a boat en route from Dawson to Seattle, and later formed a partnership. McCandless is a native of Pennsylvania and has been in the Alaskan regions since 1908. He is now in active charge of the mines.

Freight Costly.

The high cost of transportation and rather difficult methods of conveyance which existed when the project was first undertaken by Sykes, caused considerable delay. Up to a year ago, the cost of freight from Seattle to Dawson was from \$106 to \$120 per ton. Since that time the completion of the Government railroad has reduced these figures to as low as \$53 per ton. The railroad extends from Seward to Fairbanks.

To reach the Sykes-McCandless mine, the most convenient route is through Canada, by way of Eagle or Dawson. From Dawson, travel by horse is necessitated for a distance of about 80 miles. Hauling of supplies and materials can only be undertaken during the winter.

COLORED dining car waiters and sleeping car porters. Experience unnecessary. We train you. Information free. Write 507 Railway Exchange, Omaha, Neb.

Special Program and Watch Party

Eleventh and Houston

Sunday night the Light of Truth Spiritualist Church will give musical, vocal, recitation, play-ette, "Old King Earth," with 20 people. Refreshments will be served and messages given. Everybody welcome. Come early.

ROSE BUSHES

Splendid 2-year-old plants, \$5.00 and \$6.00 per dozen.

GREENWOOD FLORAL CO.

Lamar 233

when the rivers freeze solid and the trails are covered with snow and ice, thus permitting the use of sleds drawn by horses for the heavy traffic, and dog-teams for lighter conveyance. During the summer months, lack of roads prevents moving of supplies. For this reason, the shipment which was consigned out of St. Paul will be stored at Dawson until the freezing period before it can be moved.

Work Five Months.

The mines are operated only five months out of the year, also due to the freezing weather. However, there are no idle hours, for when the extraction of the gold is at a standstill, the workmen are busy in sawing necessary lumber for houses, sluices, etc., and are engaged in hauling materials and eatables for the entire year from the supply centers and railroad terminals.

By means of the hydraulic pressure, the moss and sand is removed from the top of the gravel in an operation known as "stripping the surface." Then the gold-bearing gravel is dislodged and run into the sluice boxes. Beneath the gravel is found the "bedrock," which is also run into the sluice boxes. Strips of wood, called "riffles," are fastened at angular positions in the bottom of the sluice boxes and these intercept the fine gold in the gravel and bedrock pass through in the water. The residue, known as "tailings," are shot off with the stream. After an area in size about 400x200 feet is removed from the hillside and shot into the boxes, the sluices are cleaned and the gold removed. It is then ready for deposit in the bank.

Thick Gravel Ranges.

The gravel contains sufficient gold to pay operating expenses of the mine. The bedrock beneath it contains the richest portion and has the

"big gold." Gravel ranges from 8 to 12 feet in thickness.

The banks in the vicinity of the gold mining regions of Alaska accept the gold just as American banks receive money for deposit. They, in turn, ship it to the mints either in its native state or molded into brick shapes. Value of the bricks is estimated at approximately \$20,000 each.

It is a mistaken general idea, Sykes says, that Alaska is a frigid zone, and barren. Vegetation there has resulted in the production of the best qualities of vegetables and other eatables, and its flowers and other forms of the beauties of nature vie strongly with those of California and Florida. Fresh meat is always available, the inhabitants killing the moose and caribou for supply and storing the meat in dug-outs by digging in the hillsides, where it becomes frozen within a period of 24 hours. In fact, the freezing is so marked that the meat can be broken. The only purchases necessitated are coffee, sugar and the like.

Old-Timers Remain.

Many of the "old-timers" of the days of 1898 are still living there, and are so much in love with the country that they will not leave. One prospector, 76 years old, owns a small mine, which he operates 30 days out of the year, and for his efforts he receives about \$1,200, part of which he spends for supplies, and banks the balance. He lives in a log cabin and is contented. The physical condition of this man is better than that of the average man of 40 years who resides in the States.

Sykes expects to leave for Alaska next April and will remain there for several months. His present plans call for a route across the ice by sled and horseback which will extend over a distance of 700 miles, carrying him across the mountain trails and frozen waters. The trail will start from White Horse, the head of navigation on the Yukon. The horseback trip will extend over a distance of about 400 miles. Sykes has been over the country several times and is familiar with the route.

The fiber of the water hyacinth is utilized in French Indo-China in making rope, chairs and matting.

CROP CONDITIONS

Special to The Star-Telegram.

PARIS, Texas, Dec. 31.—More than two-thirds of the tillable land in Lamar County is in shape for next year's crop, according to reports from various sections of the country.

Indications are that the cotton acreage for 1923 will greatly exceed that of 1922. There will also be a larger acreage of truck. There are many tenant farmers in the county hunting land to cultivate, with none available. Many are coming from Oklahoma, attracted by the good crop of the present year.

Jack County.

JACKSBORO, Dec. 31.—While deflation in crops and livestock values has been continuing through 1922, the Jacksboro country has not suffered up to the average owing to its diversification.

A small acreage was planted to cotton on account of past boll weevil ravages; the yield was good and prices satisfactory. A large acreage was planted in grain crops and feed and yields were good. The county has a surplus of feed crops.

The tax rolls show Jack County stockmen and farmers raise more livestock than most cattle counties in Texas. It is now a well developed stock farming country with many herds of registered cattle, as well as high grade cattle. Owing to the low market prices, most farmers have retained on their farms most of their stock and are holding for an improved market.

Local bankers report that the larger part of Jack County stockmen have been operating on their own capital so that deflation has been less harmful in its results than in most other sections, where such operations have been on borrowed capital. There are no "broke" cattlemen in this section.

The grain crop is up to a good stand and in good condition and is now furnishing excellent pasturage. The banks, industrial enterprises and merchants report satisfactory business for 1922 and prophecy better conditions for 1923.

Montague County.

BOWIE, Dec. 31.—A review of the economic and agricultural developments in Montague County for 1922 show vast improvements over the past few years.

Bovine and swine growers have shipped approximately 25 trainloads of livestock from the southern part of the county. Poultry raisers have disposed through the Bowie market several thousand, besides several carloads of chickens.

Farm Demonstration Agent Saunders

from Texas A. & M. College, with headquarters here, has aided greatly in the chicken and hog industry. Pig and corn clubs have been organized in each school district. A determined attempt is being made to check the ravages of the boll weevil.

Commercial and agricultural clubs are aiding the stockmen and the farmers of the county. Every effort is being made by the merchants to co-operate with the farmers and ranchmen in finding markets for their products.

FIELD ARTILLERY RECRUITS SOUGHT

Men wanted for Battery D, First Field Artillery.

This was the call issued by Sergeant S. Czerniecki and Special Recruiting Officer B. P. Hillard Saturday. The pair arrived from Fort Sill, Okla., where the battery is stationed, in search of men. They will remain here until Wednesday and can be found around the postoffice.

Recruits from 18 to 45 are desired. The battery is making a special drive for recruits.

Hillard was stationed in Fort Worth three years ago on recruiting duty when the army reopened its recruiting service following the World War.

Seeks Brother.

Mrs. Lucille McDonald, of Midlothian is seeking her brother, R. L. Cherry. When last heard from, Cherry was engaged in the oil and real estate business here, according to word received at the mayor's office.

1923—CONFIDENCE!

Someone has said that Confidence is the life of trade. We beg to differ, believing as we do that the life of trade is CONFIDENCE!

As 1922 draws to its close and we look forward to the New Year we enjoy a feeling of confidence.

—we have confidence in Fort Worth and its magnificent trade territory.

—we have confidence in Fort Worth's people, who have made the Panther City an ideal place in which to live and work.

As our business was founded on the cornerstone of confidence, we believe that we in turn enjoy the complete confidence of the buying public.

Our unswerving ideal is to offer only merchandise in which we have full confidence, believing that before we can make good for ourselves we must make good for our patrons.

—again, we repeat, Confidence and not Competition is the life of trade.

It was our desire to further this spirit of confidence that prompted us to inaugurate our Two-Trouser Suit Policy, and thus give our customers the greatest possible clothing value for the money. Yours for a Happy New Year.

Lucin's, the Progressive Men's Store,
806 Main Street.

Fort Worth, Texas,
Dec. 31, 1922.

We greet our customers and friends with a great deal of happiness over the past year's results in our firm's business, and are looking forward to greater accomplishments for the New Year. We believe in the future of Fort Worth and our great State, and are beginning a program of extensions and enlargements that will give to our firm approximately Three Million Bushels of Fireproof Grain Storage at Fort Worth, when we can serve our customers and the grain trade of the entire Southwest more expeditiously and satisfactorily.

We invite your co-operation and patronage.

TIE FORT WORTH ELEVATORS COMPANY OF TEXAS



May the New Year
be most bountiful
in the way of
Health, Happiness and Prosperity

MITCHELL-GREER CO. JEWELERS
FORT WORTH, TEXAS

Seventh and Main

Seventh and Main



Joseph's
New Year's Dinner

Sunday and Monday, \$1.50

Quality and Quantity

YOU'LL find Joseph's New Year's Dinner a real treat. Savory foods, ample portions and a service unexcelled.

And there's no extra charge for this Special New Years Dinner. Service a la carte if you prefer.

Joseph's Cafe



Storage in Locked Compartments "Without a Scratch"

Store your household goods in one of our private locked compartments. You carry the key. No one allowed to enter without your written order. Convenient as a safety deposit box in a bank. You can take out or put in at your pleasure. Let us show them to you.

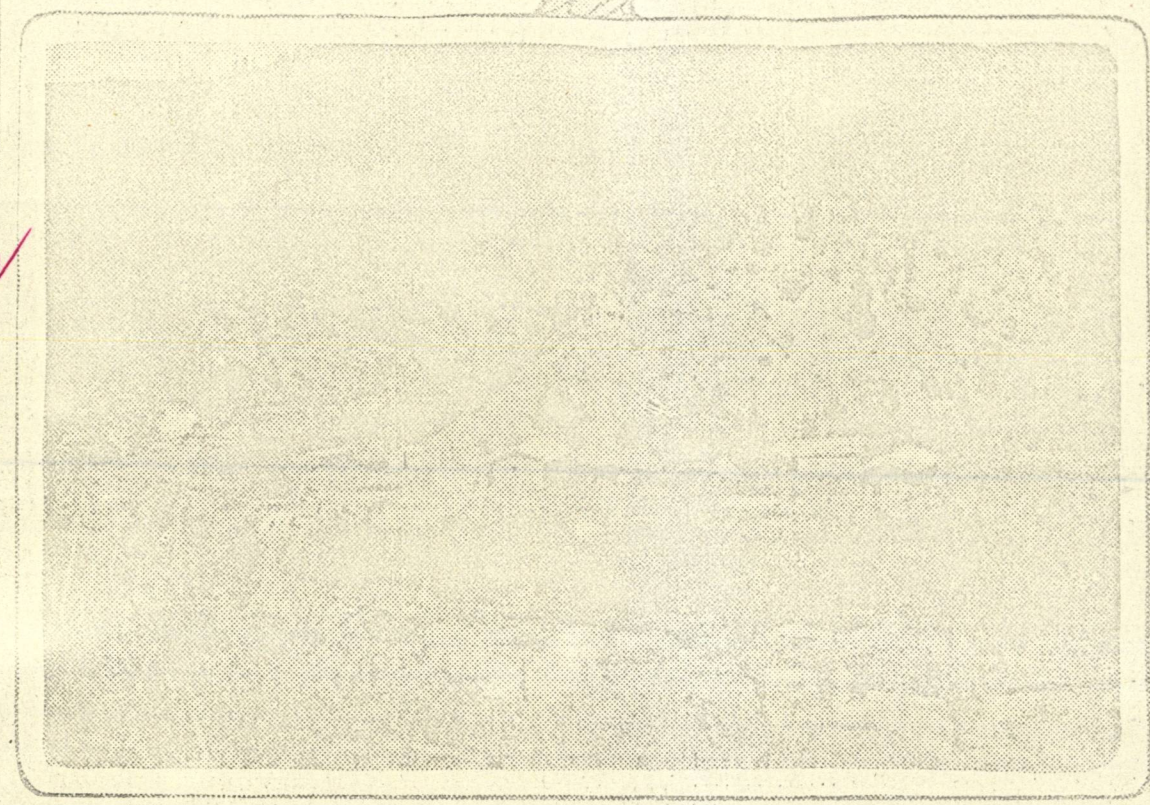
FT. WORTH WAREHOUSE & STORAGE CO.

MOVING • STORING • PACKING

"Without a Scratch"

PHONE LAMAR 702

1922



OKLAHOMAN HALF OWNER OF ALASKAN GOLD FIELD, VALUE OF WHICH IS \$100,000,000

Special to The Star-Telegram.

ARDMORE, Dec. 31.—One hundred million dollars is the value placed by a representative of the United States Bureau of Mines on a gold bearing strata of land in Alaska owned by C. E. Sykes of Ardmore, oil man and big game hunter, and his partner, A. A. McCandless. The tract is located in the 40-mile river country and extends for a distance of five miles along the river and is more than one-fourth of a mile in width on each bank. No operations have been started, but it is expected that work will be under way in the near future, following further development on another mine which the two men own in the Wade Creek district.

Sykes shipped a carload of machinery out of St. Paul, Minn., to the Wade Creek mine several weeks ago, for more extensive operations there.

Receives Nuggets.

During the past week, Sykes received a shipment of 20 pouches of gold nuggets from his Wade Creek property, which he has deposited in an Ardmore bank. The bank has shipped the gold to a Government mint where it will be weighed and valued, following which the amount it represents will be credited to Sykes' account. This is believed to be the first shipment of its kind which has ever arrived in Oklahoma.

Sykes first became interested in Alaskan mining in 1919, at which time he started on his first big game hunt in those regions. He became acquainted with McCandless while travelling on a boat en route from Dawson to Seattle, and later formed a partnership. McCandless is a native of Pennsylvania and has been in the Alaskan regions since 1893. He is now in active charge of the mines.

Freight Costly.

The high cost of transportation and rather difficult methods of conveyance which existed when the project was first undertaken by Sykes, caused considerable delay. Up to a year ago, the cost of freight from Seattle to Dawson was from \$106 to \$120 per ton. Since that time the completion of the Government railroad has reduced these figures to as low as \$53 per ton. The railroad extends from Seward to Fairbanks.

To reach the Sykes-McCandless mine, the most convenient route is through Canada, by way of Eagle or Dawson. From Dawson, travel by horse is necessitated for a distance of about 80 miles. Hauling supplies and materials can only be undertaken during the winter,

when the rivers freeze solid and the trails are covered with snow and ice, thus permitting the use of sleds drawn by horses for the heavy traffic, and dog-teams for lighter conveyance. During the summer months, lack of roads prevents moving of supplies. For this reason, the shipment which was consigned out of St. Paul will be stored at Dawson until the freezing period before it can be moved.

Work Five Months.

The mines are operated only five months out of the year, also due to the freezing weather. However, there are no idle hours, for when the extraction of the gold is at a standstill, the workmen are busy in sawing necessary lumber for houses, sluices, etc., and are engaged in hauling materials and eatables for the entire year from the supply centers and railroad terminals.

By means of the hydraulic pressure, the moss and sod is removed from the top of the gravel in an operation known as "stripping the surface." Then the gold-bearing gravel is dislodged and run into the sluice boxes. Beneath the gravel is found the "bedrock," which is also run into the sluice boxes. Strips of wood, called "riffles," are fastened at angular positions in the bottom of the sluice boxes and these intercept the free gold as the gravel and bedrock pass through in the water. The residue, known as "tailings," are shot off with the stream. After an area in size about 400x200 feet is removed from the hillside and shot into the boxes, the sluices are cleaned and the gold removed. It is then ready for deposit in the bank.

Thick Gravel Ranges.

The gravel contains sufficient gold to pay operating expenses of the mine. The bedrock beneath it contains the richest portion and has the

"big gold." Gravel ranges from 8 to 12 feet in thickness.

The banks in the vicinity of the gold mining regions of Alaska accept the gold just as American banks receive money for deposit. They, in turn, ship it to the mints either in its native state or molded into brick shapes. Value of the bricks is estimated at approximately \$20,000 each.

It is a mistaken general idea, Sykes says, that Alaska is a frigid zone, and barren. Vegetation there has resulted in the production of the best qualities of vegetables and other eatables, and its flowers and other forms of the beauties of nature vie strongly with those of California and Florida. Fresh meat is always available, the inhabitants killing the moose and caribou for supply and storing the meat in dug-outs by digging in the hillsides, where it becomes frozen within a period of 24 hours. In fact, the freezing is so marked that the meat can be broken. The only purchases necessitated are coffee, sugar and the like.

Old-Timers Remain.

Many of the "old-timers" of the days of 1898 are still living there, and are so much in love with the country that they will not leave. One prospector, 76 years old, owns a small mine, which he operates 30 days out of the year, and for his efforts he receives about \$1,200, part of which he spends for supplies, and banks the balance. He lives in a log cabin and is contented. The physical condition of this man is better than that of the average man of 40 years who resides in the States.

Sykes expects to leave for Alaska next April and will remain there for several months. His present plans call for a route across the ice by sled and horseback which will extend over a distance of 700 miles, carrying him across the mountain trails and frozen waters. The trail will start from White Horse, the head of navigation on the Yukon. The horseback trip will extend over a distance of about 400 miles. Sykes has been over the country several times and is familiar with the route.

The fiber of the water hyacinth is utilized in French Indo-China in making rope, chairs and matting.